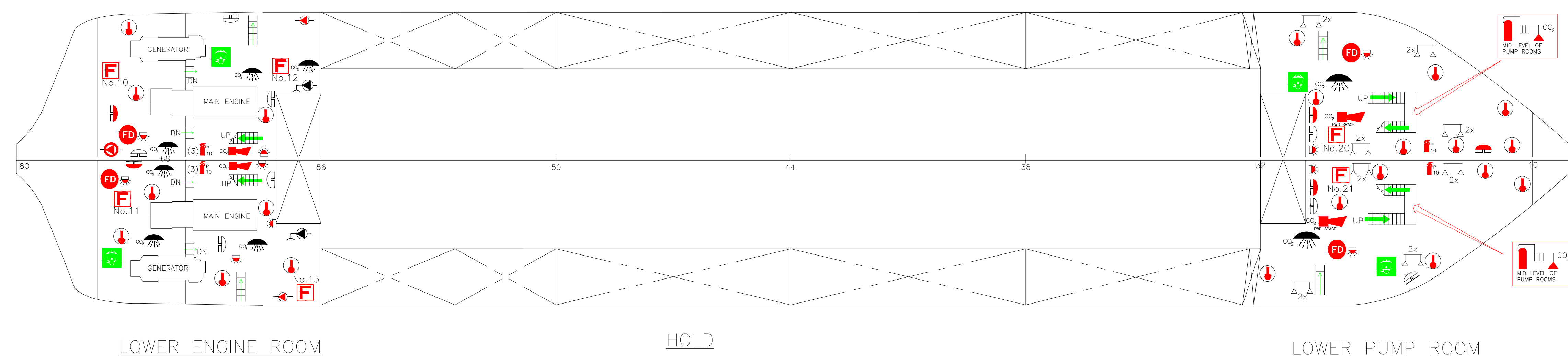
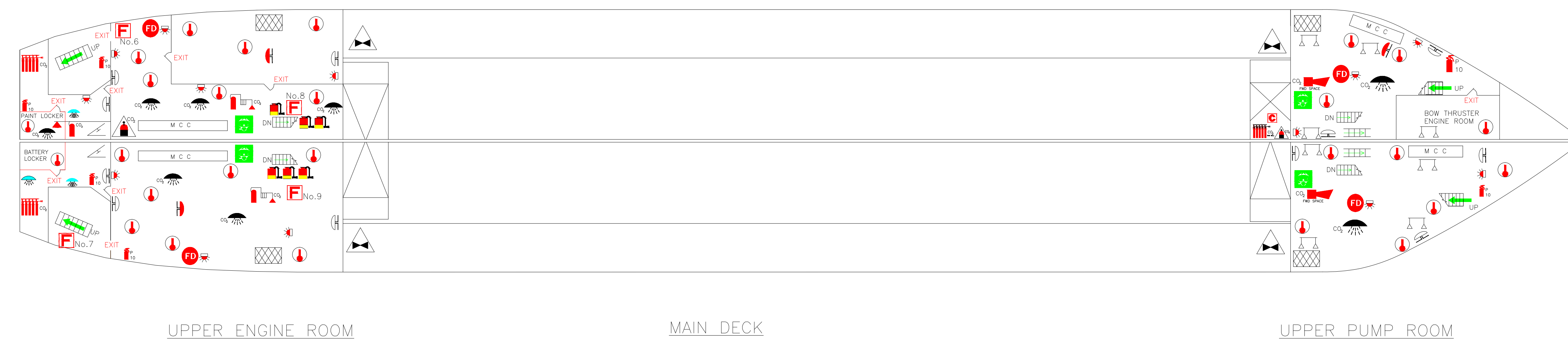
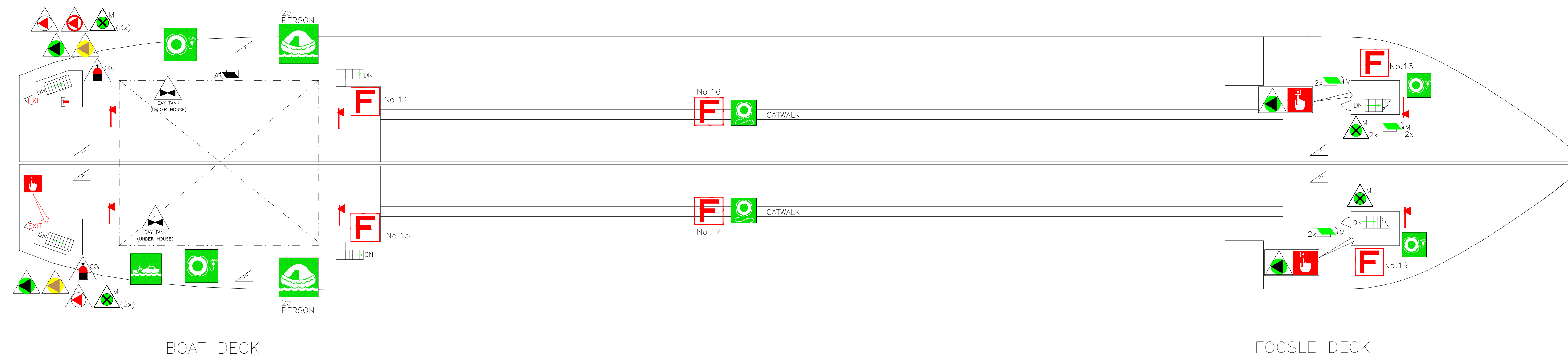
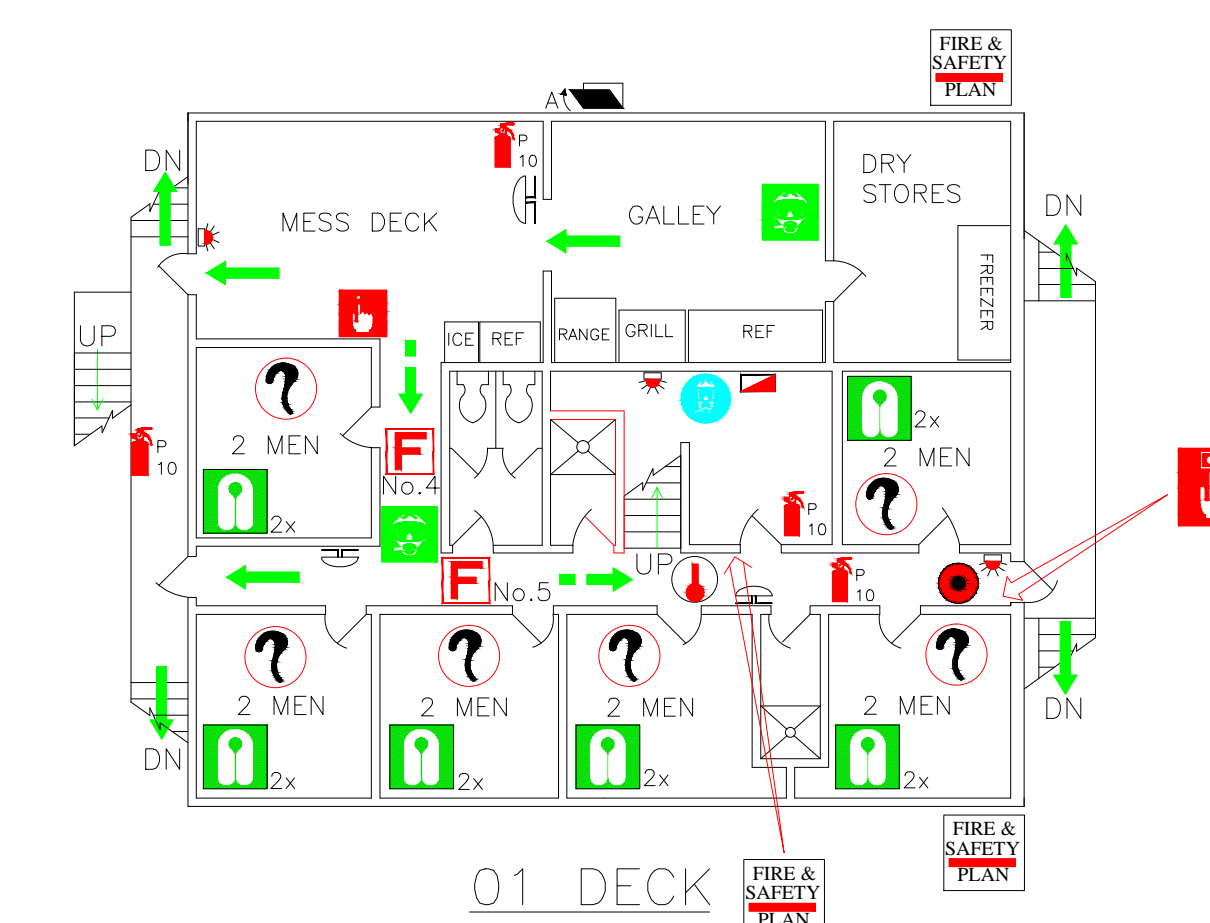
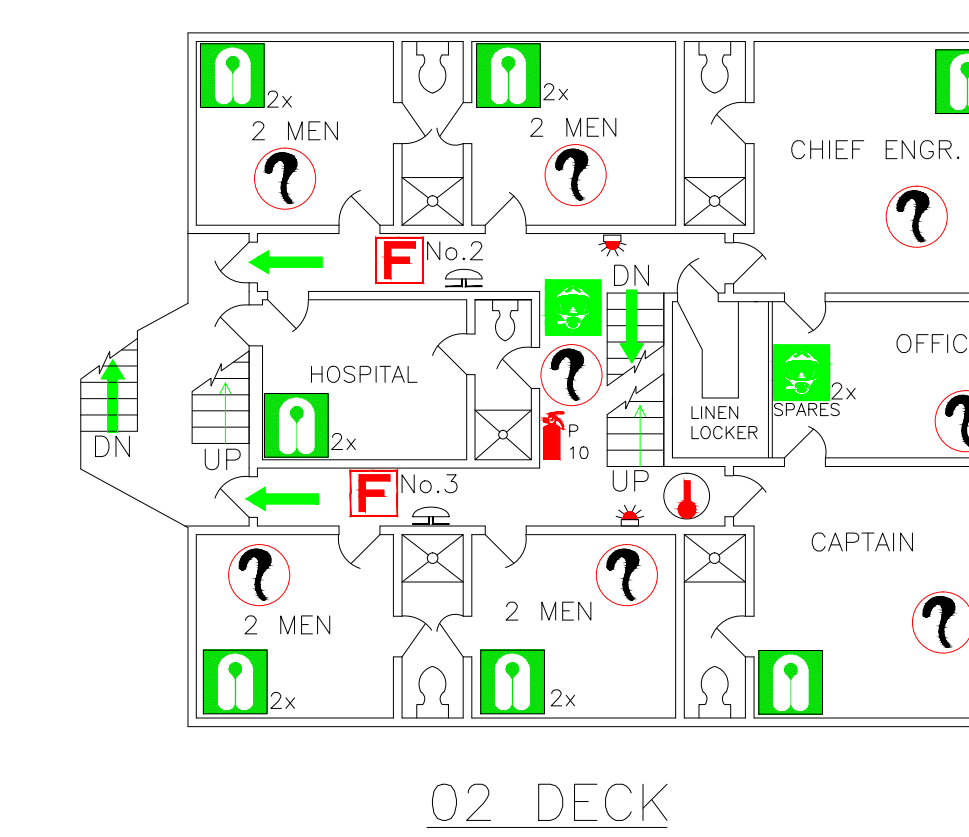
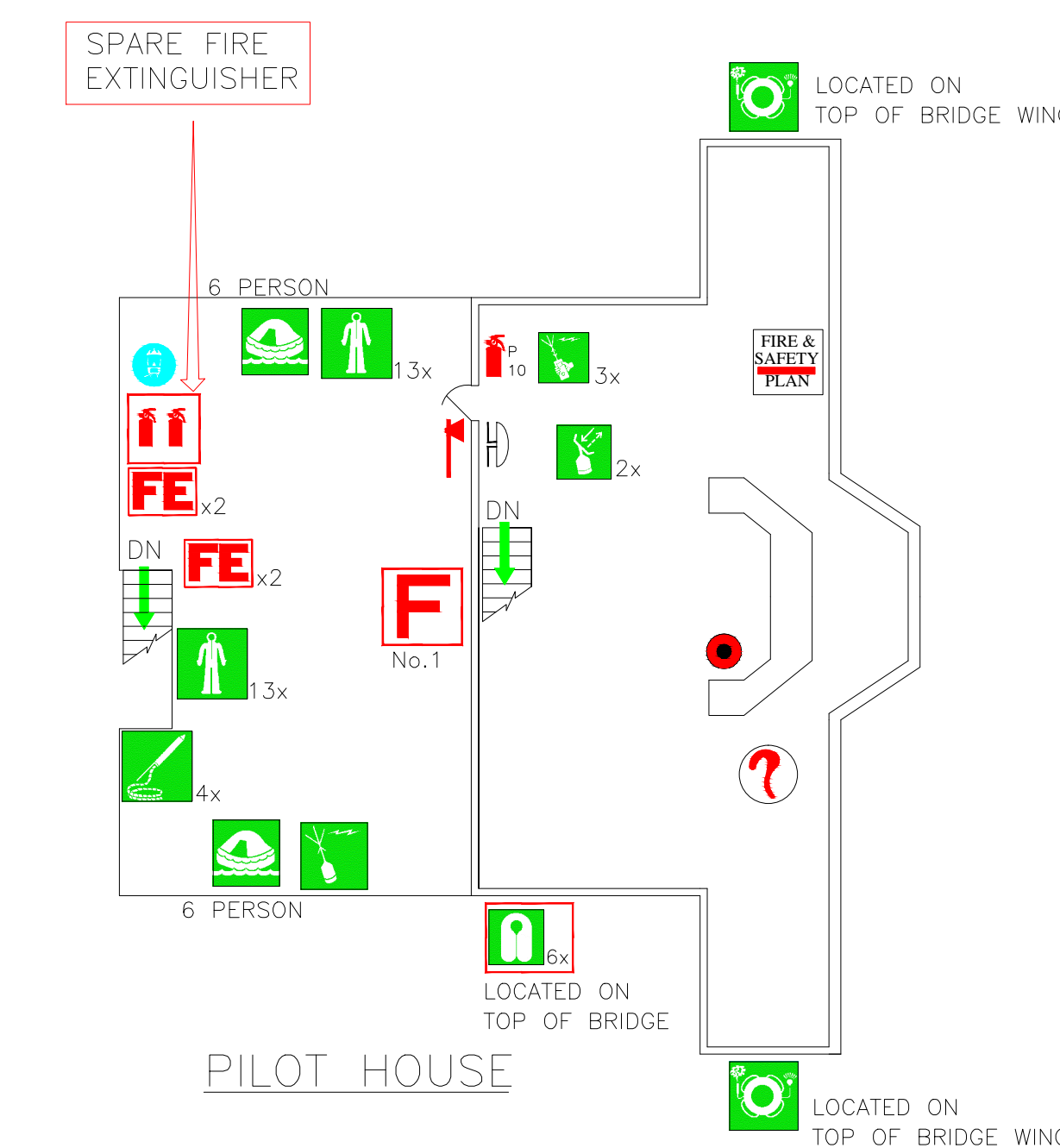


# FIRE & SAFETY PLAN for TSHD "DODGE ISLAND"



SYMBOL	QTY	DESCRIPTION	SYMBOL	QTY	DESCRIPTION
	4	LIFE RING BUOY with LIGHT		4	FIRE & SAFETY PLAN
	2	LIFE RING BUOY w/100FT LIFELINE		2	PUSH BUTTON/SWITCH for GENERAL ALARM
	2	LIFE RING BUOY w/ LIGHT & SMOKE		24	GENERAL ALARM BELL
	30	LIFEJACKETS		8	FIRE ALARM BELL
	26	EXPOSURE SUIT LOCKER			SPACE PROTECTED BY CO <sub>2</sub>
	4	LINE THROWING APPARATUS		2	CO <sub>2</sub> HORN
	1	RESCUE BOAT		4	CO <sub>2</sub> PUMP ROOM ALARM SIREN
	2	INFLATABLE LIFE RAFT - 6 PERSON		4	CO <sub>2</sub> RELEASE STATION
	2	INFLATABLE LIFE RAFT - 25 PERSON		2	CO <sub>2</sub> BATTERY-14CYL.@100Lbs each
	1	EMERGENCY POSITION INDICATING RADIO BEACON		1	CO <sub>2</sub> CYL. ASSEMBLY-13CYL.@100Lbs EA.
	2	SEARCH AND RESCUE TRANSMITTER		24	CO <sub>2</sub> FLOODING OUTLET
	3	PORTABLE VHF RADIO		48	HEAT SENSOR
	13	EMERGENCY ESCAPE BREATHING DEVICE		15	SMOKE DETECTOR
	2	LOCKER WITH BREATHING APPARATUS		2	FIRE PUMP
		A - CLASS DIVISION		1	EMERGENCY FIRE PUMP
				2	BILGE PUMP



	1	CO <sub>2</sub> CONTROL STATION (RAM WELL)
	21	FIRE STATION
	1	INTERNATIONAL SHORE CONNECTION
	4	CO <sub>2</sub> BOTTLE HOSE REEL
	6	FOAM APPLICATOR - 5 GAL. PORTABLE
	8	SPACE PROTECTED BY AUTOMATIC FIRE ALARM
	20	PORTABLE EXTINGUISHER 10 LBS DRY CHEM
	28	EMERGENCY LIGHTS
	4	FIREMAN'S OUTFIT/ EMERGENCY GEAR LOCKER
	5	MANUALLY OPERATED CALL POINT
	8	VENTILATION SHUTOFF - MACHINERY
	1	VENTILATION OUTLET - SERVICE SPACE
	6	VENTILATION OUTLET - MACHINERY
	2	REMOTE START/STOP for FIRE PUMP
	1	REMOTE START/STOP for EMERGENCY FIRE PUMP
	4	REMOTE START/ STOP BILGE PUMP
	2	REMOTE STOP F/O TRANSFER PUMP
	6	REMOTE SHUTOFF FOR FUEL OIL
	1	FIRE ALARM PANEL
	7	FIRE AXE
	2	EMERGENCY EYE WASH STATION
	1	EMERGENCY SHOWER STATION
		PRIMARY MEANS OF ESCAPE
		SECONDARY MEANS OF ESCAPE
	8	EMERGENCY ESCAPE HATCH
	6	EMERGENCY ESCAPE LADDER
	4	EMERGENCY ESCAPE GRATING

REV	DATE	DESCRIPTION
26MAR15		CHANGED PILOT HOSE HEAT SENSOR TO SMOKE DETECTOR
16MAR15		UPDATED DRAWING TO MATCH CURRENT LAYOUT
13MAR15		ADDED NEW CO2 FIRE SYSTEM TO PUMP ROOM & RAM WELL. ADDED QTY FOR EMER. LIGHTS, HEAT SENSOR & SMOKE DETC. (KOD)
09SEP09		REVISED DWG PER REVIEW OF USCG SECTOR NEW ORLEANS, LA
03MAR09		ADDED 2 FOAM APPLICATORS PER ENGINE ROOM AS PER ABS REVIEW - ADDED QUANTITY OF ITEMS
01OCT07		UPDATED LAYOUT OF DREDGE PER CAPTAIN OF DREDGE
13MAR07		UPDATED LAYOUT OF DREDGE PER CAPTAIN OF DREDGE
20NOV06		UPDATED & CORRECTED LAYOUT OF DREDGE PER CAPT.
31OCT05		CORRECTED LAYOUT OF O2 LEVEL OFFICE AND LINEN LOCKER
21SEP05		REVISED DWG PER REVIEW OF USCG MSO MOBILE, AL
10SEP03		ADDED FOAM EXTINGUISHERS AS PER ABS REVIEW

GREAT LAKES DREDGE & DOCK CO.  
2122 YORK ROAD OAK BROOK, ILLINOIS 60523  
DREDGE "DODGE ISLAND"

FIRE AND SAFETY PLAN

DATE	BY	SCALE
11APR03	C E V G	1/8"=1'-0"

DRAWING NO.	142	19	2037
-------------	-----	----	------

AUTOCAD FILE: 142-19-2037 FIRE & SAFETY PLAN - Rev 9.Dwg  
This material is the exclusive property of the GREAT LAKES DREDGE & DOCK CO. All information contained hereon is confidential. It is loaned to the recipient under express conditions that it is not to be copied, duplicated or used in any means detrimental to GREAT LAKES DREDGE & DOCK CO.  
LAST UPDATE: 09SEP09